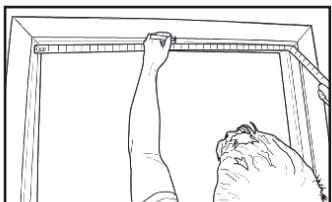


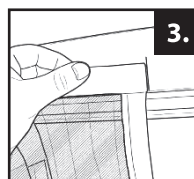
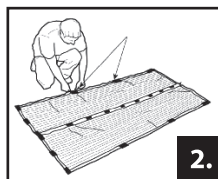
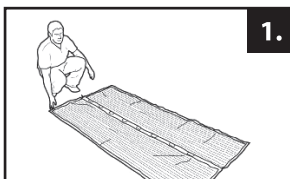
Mounting instructions:

- Before mounting please make sure that the surface is free from dirt and dust.
- Pay attention to the right direction before mounting the net:
- If your door opens in, mount the net on the outer side of the door frame.
- If your door opens out, mount the net on the inner side of the door frame.
- Mark the middle of the opening above the door frame.

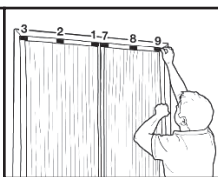
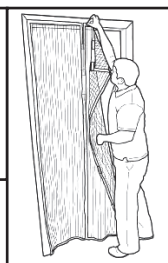
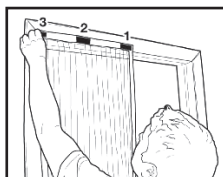


Mounting of the net:

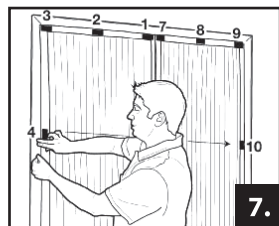
1. Put the net on the ground so that the magnets tend towards the centre.
2. Make sure that the magnets attract each other.
3. Remove the back side of the self-adhesive tape and stick the self-adhesive strips on the marked spots.



4. Take the net marked with 'A' and stick it on the self-adhesive strips. Make sure that the net does not reach the ground.
5. Take the net marked with 'B' and stick it on the self-adhesive strips. Make sure that the net does not reach the ground.
6. Check if the magnets in the centre are next to each other.
7. Fix the remaining self-adhesive strips on the door frame (4-6 & 10-12)



4-5-6.



7.

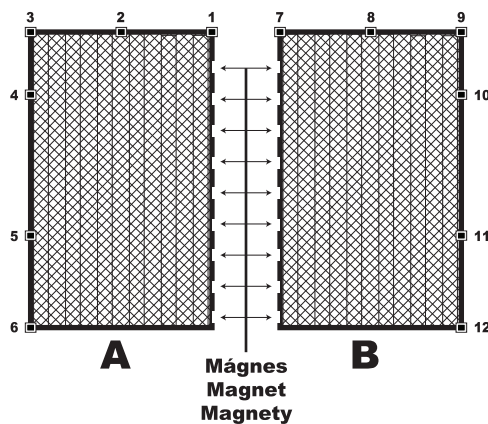
Cleaning:

- Do not use sharp or rough cleaning tool.
- Wipe the net with wet towel.

Safety advices:

- Keep the packaging out of reach of children to avoid the danger of suffocation.
- Keep the appropriate distance in rooms where fire danger may occur (For example: cooking rooms, cookers and stoves, heaters)

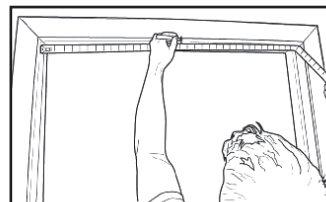
EN



Mágnes
Magnet
Magnety

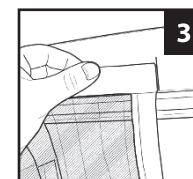
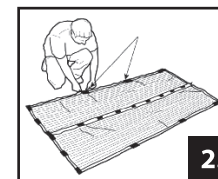
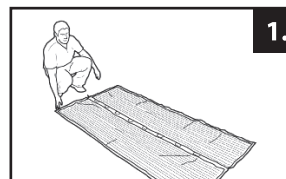
Felszerelési útmutató:

- Mielőtt feltenné a függönyt, győződjön meg arról, hogy a felület szennyeződésektől mentes.
- Figyelje meg a helyes irányt a függöny felszerelése előtt:
- Amennyiben ajtaja befelé nyílik, a függönyt az ajtókeret külső oldalára tegye fel.
- Amennyiben ajtaja kifelé nyílik, a függönyt az ajtókeret belső oldalára tegye fel.
- Jelölje meg a nyílás közepét az ajtókeret felett.

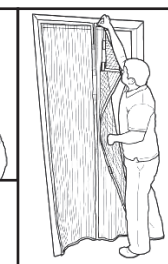
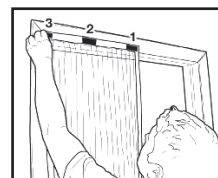


A függöny felszerelése:

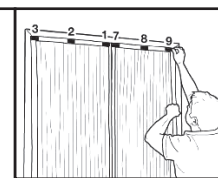
1. Helyezze a függönyt a talajra úgy, hogy a mágnesek középre irányuljanak.
2. Ellenőrizze a mágneseket, hogy azok egymást kölcsönösen vonzzák-e.
3. Távolítsa el az öntapadó ragasztó hátoldalát és ragassza az öntapadó csíkokat a megjelölt helyekre



4. Fogja az 'A' jelű függönyt és ragassza az öntapadó csíkokra. Figyeljen arra, hogy a függöny ne érje a talajt.
5. Fogja a 'B' jelű függönyt és ragassza az öntapadó csíkokra. Figyeljen arra, hogy a függöny ne érje a talajt.
6. Ellenőrizze, hogy középen a mágnesek egymással szemben helyezkednek-e el.
7. Erősítse fel a maradék öntapadó ragasztócsíkokat az ajtókeretre (4-6 & 10-12)



4-5-6.



7.

Tisztítás:

- Ne használjon éles vagy durva tisztító eszközt.
- Törölje le a hálót nedves kendővel.

Biztonsági tanácsok:

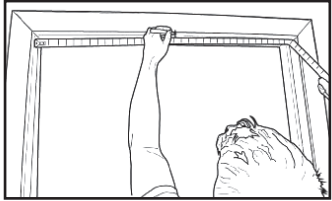
- Tartsa távol a gyerekeket a csomagolóanyagtól. Fennáll a fulladás veszélye.
- Tartsa meg a megfelelő távolságot olyan helyiségekben, ahol fennállhat a tűzveszély! (Pl: főző helyiségek, tűzhelyek, fűtőtestek.)

HU

Instrucțiuni de montaj:

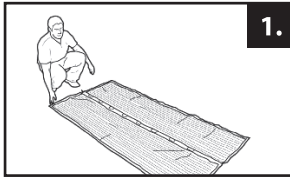
RO

- Înainte de montare verificați locul de instalare să fie lipsit de impurități
- Verificați direcția corectă înainte de instalare
- În cazul în care ușa se deschide înspre interior, plasa se va instala pe canatul exterior
- În cazul în care ușa se deschide înspre exterior, plasa se va instala pe canatul interior
- Marcați mijlocul ușii deasupra canatului superior

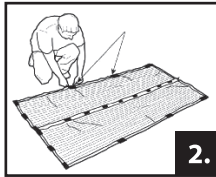


Montarea perdelei

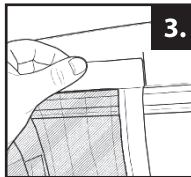
1. Așezați perdeaua pe sol cu magneții îndreptați spre centru
2. Magneții trebuie să se atragă între ei.
3. Îndepărtați folia protectoare de pe autoadeziv și lipiți benzile pe locațiile desemnate



1.

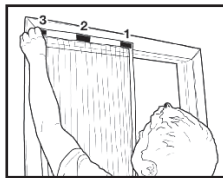


2.

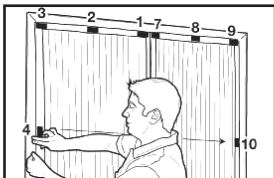
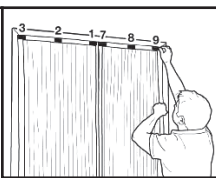


3.

4. Lipiți perdeaua marcată cu A pe banda autoadezivă. Aveți grijă, ca perdeaua să nu ajungă pe sol.
5. Lipiți perdeaua marcată cu B pe banda autoadezivă. Aveți grijă, ca perdeaua să nu ajungă pe sol.
6. Verificați ca magneții să fie așezați față în față
7. Fixați restul de bandă autoadezivă pe canat (4-6 & 10-12)



4-5-6.



7.

Curățire:

- Nu folosiți agenți de curățare agresivi sau abrazivi
- Ștergeți plasa cu cârpă umedă

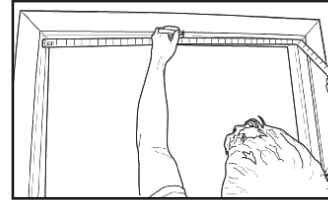
Aviz de siguranță:

- Feriți ambalajul de accesul copiilor. Există pericol de asfixiere.
- Păstrați distanța sigură în încăperi unde persistă pericolul vreunui incendiu. (Ex. spații de gătit, sobe, radiatoare, etc.)

Návod na montáž:

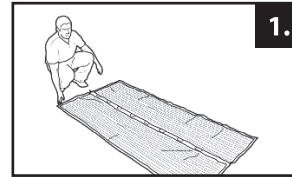
SK

- Predtým ako začnete s montážou ubezpečte sa o tom, že povrch rámu je čistý.
- Ešte pred začiatkom montáže dbajte na správne otočenie závesu:
- Ak sa dvere otvárajú dovnútra, záves je potrebné montovať na vonkajšiu stranu rámu.
- Ak sa dvere otvárajú smerom von, záves je potrebné montovať z vnútornej strany rámu.
- Poznačte si hore na rám stred dverí.

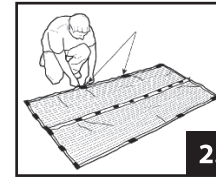


Montáž závesu:

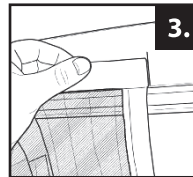
1. Umiestnite záves na zem, tak aby magnety smerovali smerom do vnútra.
2. Skontrolujte či sa magnety, ktoré sú oproti sebe navzájom priťahujú.
3. Odstráňte kryciu fóliu so samolepiacej pásky a nalepte ju na vyznačené miesta.



1.

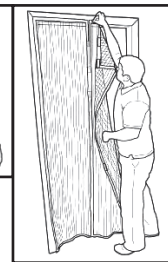
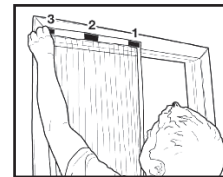


2.

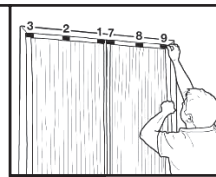


3.

4. Uchopte časť závesu označenú 'A' a nalepte ju na samolepiacu pásku. Dbajte na to aby záves nesiahal až úplne po zem.
5. Uchopte časť závesu označenú 'B' a nalepte ju na samolepiacu pásku.. Dbajte na to aby záves nesiahal až úplne po zem.
6. Skontrolujte, či v strede umiestnené magnety ležia presne oproti sebe.
7. Pomocou zvyšku samolepiacej pásky zosilnite prilepené spoje na ráme dverí (4-6 & 10-12)



4-5-6.



7.

Údržba:

- Nepoužívajte ostré alebo drsné čistiace prostriedky.
- Udržujte záves vlhkou handričkou.

Bezpečnostné pokyny:

- Obalový materiál skladujte mimo dosah detí. POZOR Nebezpečenstvo udusenía.
- Dbajte na to, aby záves bol umiestnený v dostatočnej vzdialenosti od zdrojov tepla, nebezpečenstvo požiaru! (Např.: šporáky, pece, krby a pod.)